

# SHOE HORN & SOCK REMOVER



## INSERT

Insert shoe horn and slide foot down



## SLIDE

Slip shoe horn between sock and leg



## PUSH

Push sock down over heel and off your foot

# DRESSING HOOK



## REACH

Extend your reach to pick up clothing and other items



## PULL

Use the hook to assist in pulling clothing on and off

easy™  
TO USE PRODUCTS

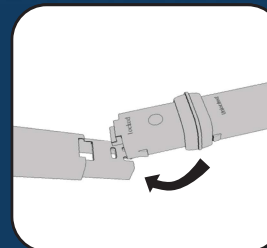
reach  right.

# DRESSING KIT USER GUIDE

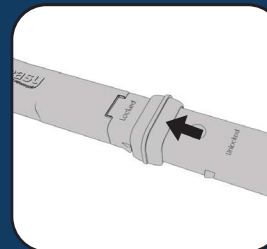
## ASSEMBLY INSTRUCTIONS:

### EXTENSION & HANDLES

Insert end into socket and lower

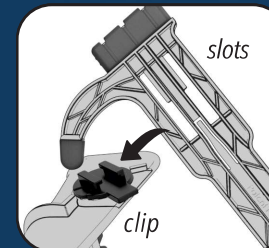


Slide locking ring forward until click

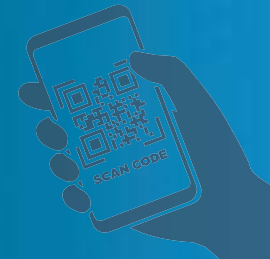
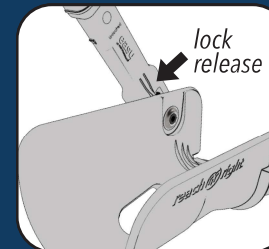


### PADDLES & CANISTER

Align slots onto clip and pull until handle locks



To detach: press lock release and push handle off



VIEW INSTRUCTIONS AND DEMOS ONLINE  
[WWW.REACHRIGHTKIT.COM](http://WWW.REACHRIGHTKIT.COM)

# SOCK CANISTER SOCK AID

**STOP STRAINING...  
REACH RIGHT!**



## LOAD

Stretch top of sock over canister and slide down until you see inside of toe



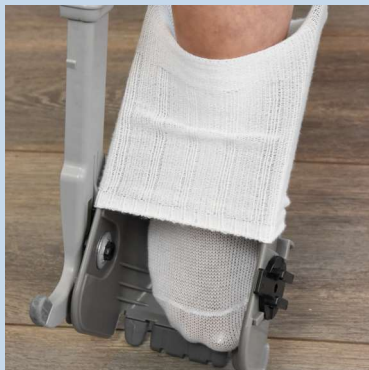
## ATTACH

Connect dressing hook to black clip with tab pointing toward handle



## INSERT

Carefully slide foot into sock until foot reaches the toe of sock



## ROTATE

Rotate sock canister up until the grips engage with the floor



## PUSH

Continue pushing foot into sock until canister is in upright position



## RELEASE

Push sock canister off sock and remove dressing hook from canister\*

Canister Rotates



SEE HOW TO ASSEMBLE & USE AT  
[WWW.REACHRIGHTKIT.COM](http://WWW.REACHRIGHTKIT.COM)

\* Use dressing hook or hands to pull top of sock up leg if needed